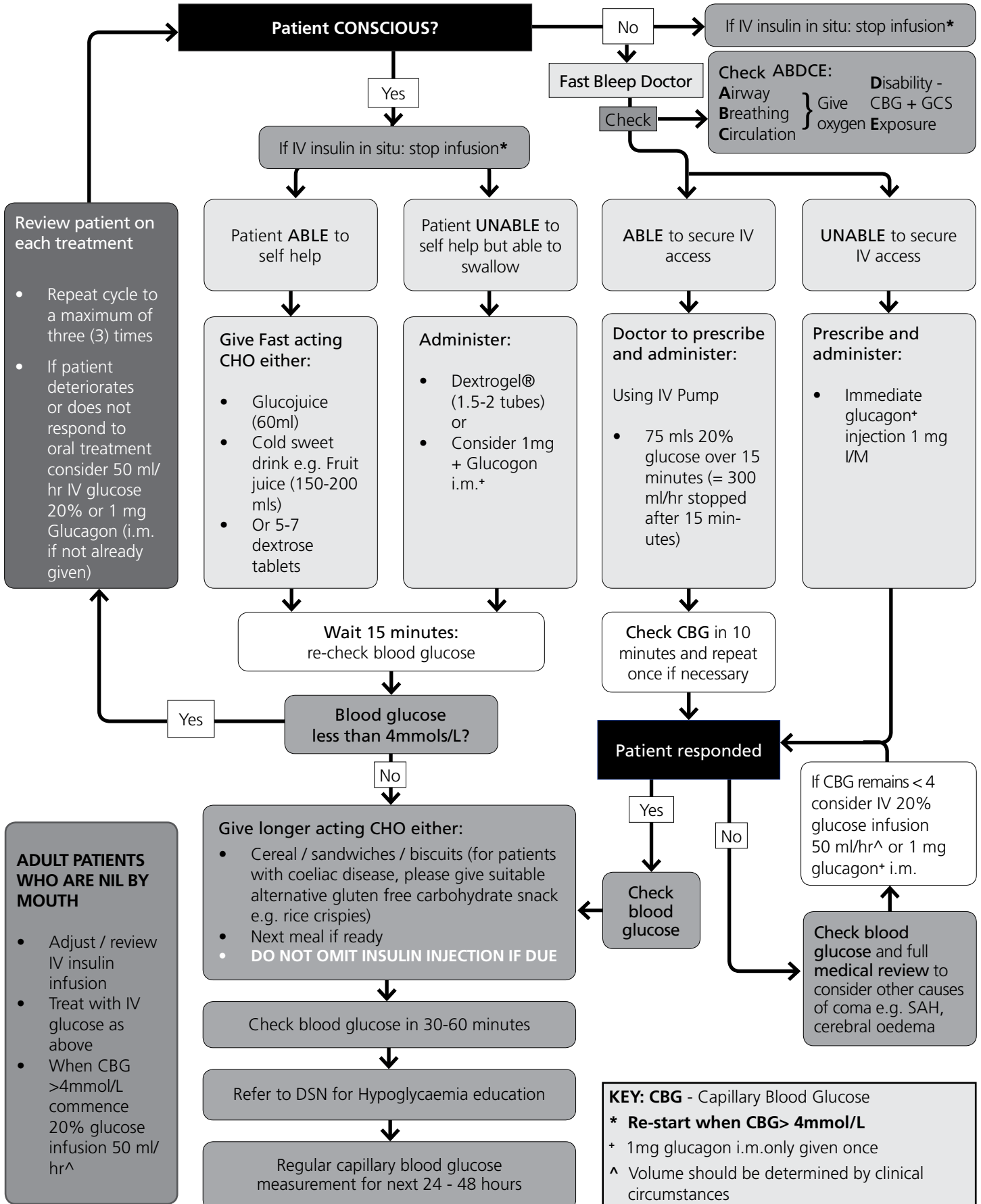


With or without symptoms

- Sweating
- Anxiety / Irritability
- Difficulty in concentrating
- Trembling
- Pale
- Vague / Confused
- Feeling of hunger
- Palpitations
- Convulsions
- Tingling of lips
- Coma



ADULT PATIENTS WHO ARE NIL BY MOUTH

- Adjust / review IV insulin infusion
- Treat with IV glucose as above
- When CBG >4mmol/L commence 20% glucose infusion 50 ml/hr^

KEY: CBG - Capillary Blood Glucose
 * Re-start when CBG> 4mmol/L
 + 1mg glucagon i.m. only given once
 ^ Volume should be determined by clinical circumstances